

# RHS CNC PULL CLAMPS

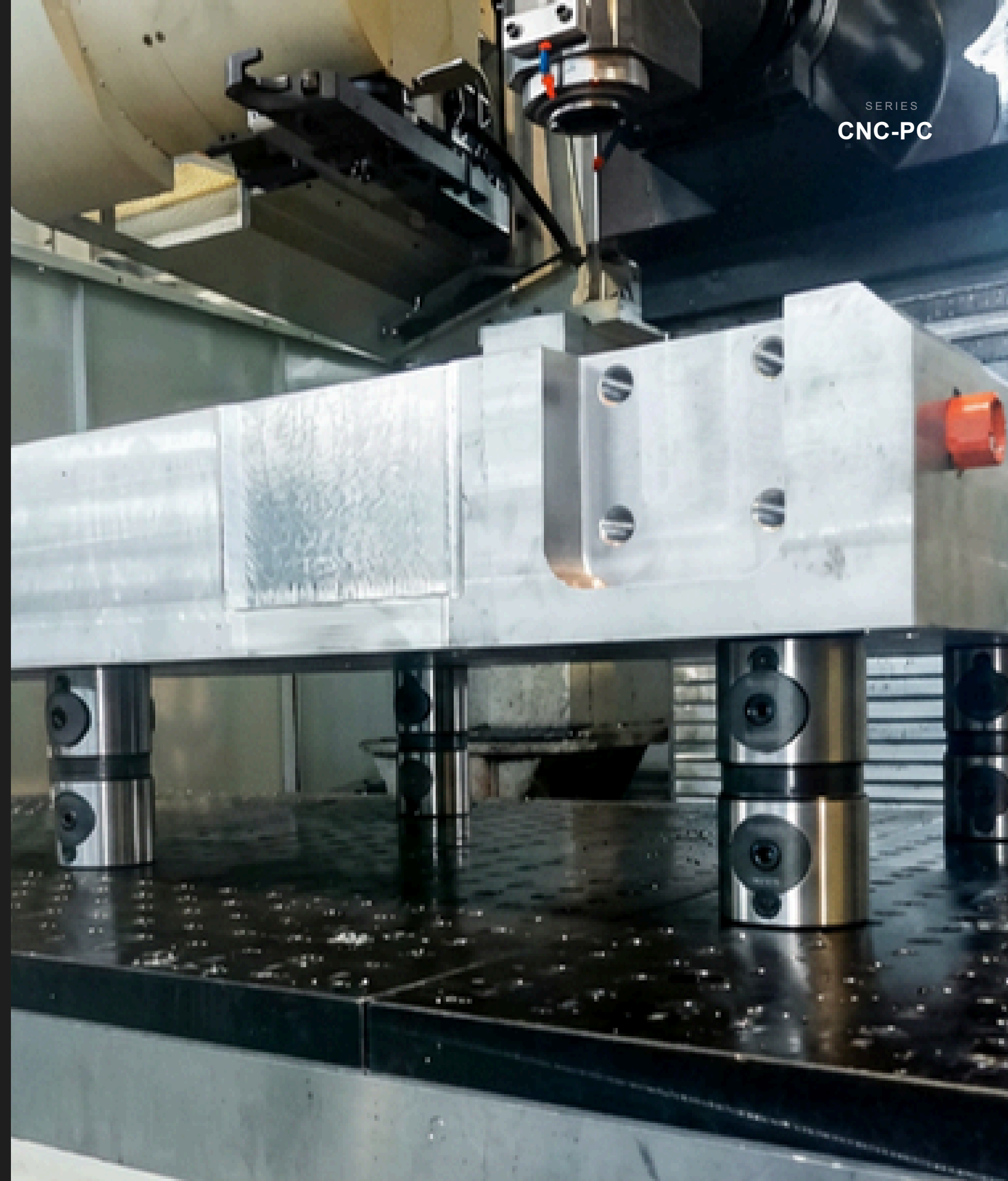
The complete lineup of modular pull-clamping screws, modules and fixture plates — engineered for precision, built for the shop floor.

SKUS  
**17+**

REPEATABILITY  
**±0.005 MM**

STANDARD  
**FCS · WOW**

CLAMPING  
**6–18 KN**



ABOUT THE SYSTEM

# HIGH-QUALITY, AFFORDABLE TOOLING.

The **CNC Pull Clamping System** is a modular zero-point workholding solution engineered for horizontals, verticals, EDM and 5-axis machining. One mounting interface covers screws from M8 to M16 and modules from 40 to 80 mm — stackable to any height.

**±0.005**  
**mm**  
REPEATABILITY

**18 kN**  
MAX CLAMPING

**46-60**  
**HRC**  
HARDNESS

## WHY SPEC RHS

### 01 / FIT

#### FCS - WOW - IMAO COMPATIBLE

Drop-in replacement for existing tooling ecosystems — no retooling of fixtures or plates.

### 03 / STACK

#### MODULAR HEIGHTS

Single and double modules stack to reach any workpiece height without custom fixturing.

### 05 / PLATES

#### UNIVERSAL FIXTURE PLATE

50 mm pitch hole pattern — mount any combination of modules on a single platform.

### 02 / MATERIAL

#### CHROME STEEL, FULLY HARDENED

46–60 HRC on modules, 44–52 HRC on screws. Built for daily clamping cycles.

### 04 / PRICE

#### DIRECT-FROM-MANUFACTURER

Premium metrology, affordable line-item cost. Quantity pricing on request.

### 06 / SERVICE

#### 51511 BATTANWOOD DR. MACOMB, MI 48042,

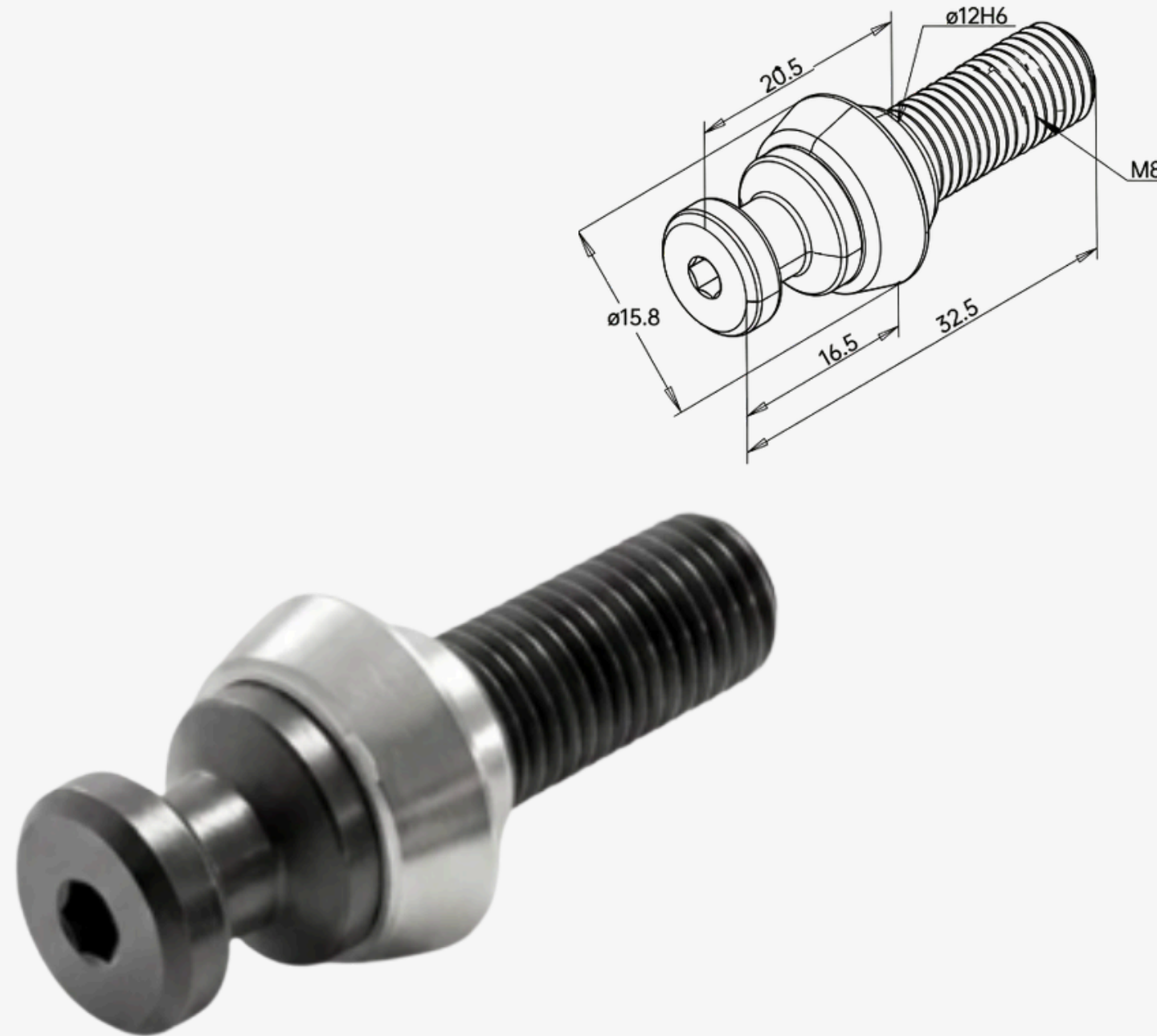
Local inventory and technical support. Shipping across North America.



## PRODUCT LINEUP

# EVERY SKU, ONE SYSTEM

SKU	PAGE	NAME	SIZE	CLAMPING	TORQUE	WEIGHT
RHS-C4001	→ 04	TAPERED CLAMPING SCREW · M8	<b>SIZE</b> Ø15.8 × 32.5 mm	<b>FORCE</b> 6 000 N	<b>TORQUE</b> —	<b>WEIGHT</b> 0.8 kg
RHS-C6001	→ 05	TAPERED CLAMPING SCREW · M12	<b>SIZE</b> Ø23.6 × 50 mm	<b>FORCE</b> 6 000 N	<b>TORQUE</b> —	<b>WEIGHT</b> 0.8 kg
RHS-C8001	→ 06	TAPERED CLAMPING SCREW · M16	<b>SIZE</b> Ø31.5 × 65.5 mm	<b>FORCE</b> 6 000 N	<b>TORQUE</b> —	<b>WEIGHT</b> 0.8 kg
RHS-C6002	→ 07	PULL-DOWN MODULE 60 · SINGLE	<b>SIZE</b> 60 × 60 mm	<b>FORCE</b> 12 000 N	<b>TORQUE</b> 30 Nm	<b>WEIGHT</b> 2.34 kg
RHS-C8002	→ 08	PULL-DOWN MODULE 80 · SINGLE	<b>SIZE</b> 80 × 80 mm	<b>FORCE</b> 18 000 N	<b>TORQUE</b> 40 Nm	<b>WEIGHT</b> 3 kg
RHS-C4002	→ 09	PULL-DOWN MODULE 40 · DOUBLE	<b>SIZE</b> 40 × 80 mm	<b>FORCE</b> 6 000 N	<b>TORQUE</b> 15 Nm	<b>WEIGHT</b> 4.5 kg
RHS-C6003	→ 10	PULL-DOWN MODULE 60 · DOUBLE	<b>SIZE</b> 60 × 120 mm	<b>FORCE</b> 12 000 N	<b>TORQUE</b> 30 Nm	<b>WEIGHT</b> 5 kg
RHS-C8003	→ 11	PULL-DOWN MODULE 80×160 · DOUBLE	<b>SIZE</b> 80 × 160 mm	<b>FORCE</b> 18 000 N	<b>TORQUE</b> 40 Nm	<b>WEIGHT</b> 6 kg
RHS-C8004	→ 12	PULL-DOWN MODULE 80×200 · DOUBLE	<b>SIZE</b> 80 × 200 mm	<b>FORCE</b> 18 000 N	<b>TORQUE</b> 40 Nm	<b>WEIGHT</b> 7 kg
RHS-C8007	→ 13	CLAMPING MODULE · FLANGED	<b>SIZE</b> 75 × 42 × 40 mm	<b>FORCE</b> 6 000 N	<b>TORQUE</b> 15 Nm	<b>WEIGHT</b> —
RHS-C7002	→ 14	HOOK CLAMPING MODULE D80 · FLANGE	<b>SIZE</b> 150 × 80 × 74 mm	<b>FORCE</b> 18 000 N	<b>TORQUE</b> 40 Nm	<b>WEIGHT</b> —
RHS-C8006	→ 15	CLAMPING MODULE DIA. 80 MM SINGLE	<b>SIZE</b> 100 × 80 × 73 mm	<b>FORCE</b> 18 000 N	<b>TORQUE</b> 40 Nm	<b>WEIGHT</b> —
RHS-C7001	→ 16	CNC PULL DOWN CLAMPING MODULE 80 FLANGED	<b>SIZE</b> 145 × 80 × 80 m	<b>FORCE</b> 18 000 N	<b>TORQUE</b> 30 Nm	<b>WEIGHT</b> —
RHS-C1001	→ 17	UNIVERSAL FIXTURE PLATE	<b>PITCH</b> 50 mm	<b>FIT</b> FCS / WOW	<b>CUSTOM</b> On request	<b>TYPE</b> Modular plate



SKU  
**C4001**

Ø15.8 × 32.5 MM · M8

## RHS-C4001

# TAPERED CLAMPING SCREW, M8

Compact pull stud for mounting directly to workpieces or riser blocks. Self-locating taper interfaces with FCS-compatible modules in the Ø40 pattern.

PART NUMBER	<b>RHS-C4001</b>
SIZE	Ø15.8 × 32.5 mm
MATERIAL	Chrome steel
HARDNESS	HRC 44–52
CLAMPING FORCE	<b>6 000 N</b>
WEIGHT	0.8 kg
COMPATIBILITY	FCS pull-down modules, Ø40 series

THREAD  
**M8**

LOCATING  
**SELF-TAPERED**

SERIES  
**CNC-PC**



SKU  
**C6001**

Ø23.6 × 50 MM · M12

**RHS-C6001**

# TAPERED CLAMPING SCREW, M12

Mid-size clamping screw for Ø60 modules. Hardened chrome steel, self-locating taper. Drop-in compatible with FCS Ø60 pattern.

PART NUMBER **RHS-C6001**

SIZE Ø23.6 × 50 mm

MATERIAL Chrome steel

HARDNESS HRC 44–52

CLAMPING FORCE **6 000 N**

WEIGHT 0.8 kg

APPLICATION For Ø60 module

THREAD  
**M12**

MODULE  
**Ø60MM**

SERIES  
**CNC-PC**



SKU  
**C8001**

Ø31.5 × 65.5 MM · M16

**RHS-C8001**

# TAPERED CLAMPING SCREW, M16

Heavy-duty clamping screw for Ø80 modules. Full-hardness taper optimized for repeated setup cycles on 5-axis and HMC fixtures.

PART NUMBER **RHS-C8001**

SIZE Ø31.5 × 65.5 mm

MATERIAL Chrome steel

HARDNESS HRC 44–52

CLAMPING FORCE **6 000 N**

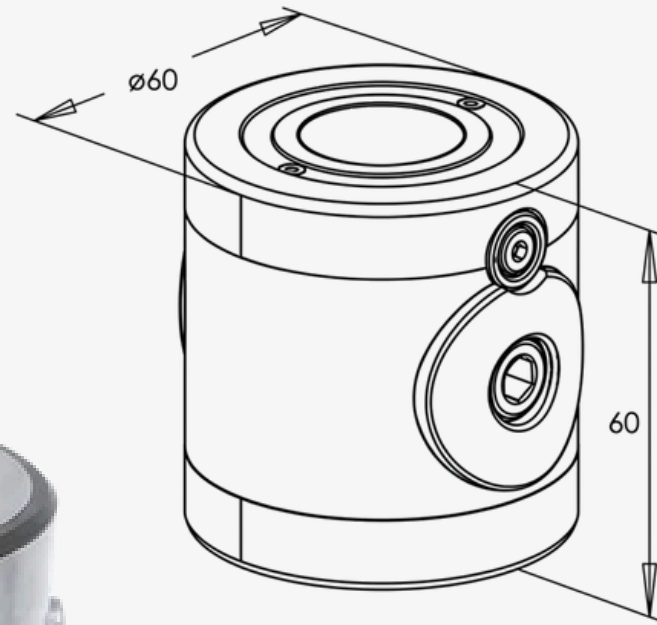
REPEATABILITY ±0.005 mm

APPLICATION For Ø80 module

THREAD  
**M16**

MODULE  
**Ø80MM**

WEIGHT  
**0.8KG**



**RHS-C6002**

# PULL-DOWN MODULE 60, SINGLE

FCS-compatible single-stud module for standard-height workpieces. Bolt-down mounting for fixture plates. Accepts RHS-C6001 M12 screws.

PART NUMBER **RHS-C6002**

SIZE 60 × 60 mm

MATERIAL Chrome steel

CLAMPING FORCE **12 000 N**

HARDNESS 46–60 HRC

MAX TORQUE 30 Nm

REPEATABILITY ±0.005 mm

WEIGHT 2.34 kg

STUDS  
**1**

FORMAT  
**SINGLE**

PAIRS WITH  
**C6001**

SKU  
**C6002**

60 × 60 MM · SINGLE STUD



SKU  
**C8002**

80 × 80 MM · SINGLE STUD

**RHS-C8002**

# PULL-DOWN MODULE 80, SINGLE

Heavy-duty single-stud module for 5-axis and HMC fixtures. 18 kN pull-down force with ±0.005 mm repeatability setup-to-setup.

PART NUMBER **RHS-C8002**

SIZE 80 × 80 mm

MATERIAL Chrome steel

CLAMPING FORCE **18 000 N**

HARDNESS 46–60 HRC

MAX TORQUE 40 Nm

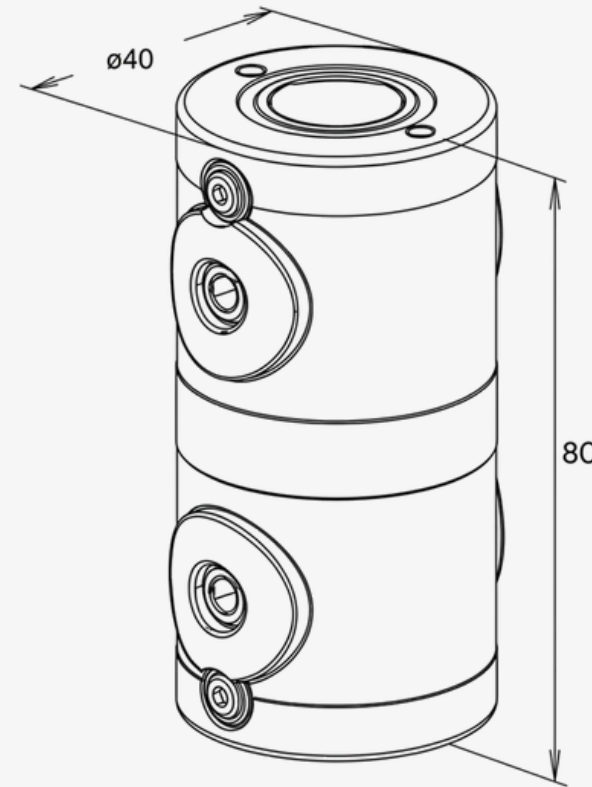
REPEATABILITY ±0.005 mm

WEIGHT 3 kg

STUDS  
**1**

FORMAT  
**SINGLE**

PAIRS WITH  
**C8001**



SKU  
**C4002**

40 × 80 MM · STACKED

**RHS-C4002**

# PULL-DOWN MODULE 40, DOUBLE

Stacked double module for extended workpiece heights. Two M8 pull points on a single 40×80 footprint — inventory efficient, setup fast.

PART NUMBER **RHS-C4002**

SIZE 40 × 80 mm

MATERIAL Chrome steel

CLAMPING FORCE **6 000 N**

HARDNESS 46–60 HRC

MAX TORQUE 15 Nm

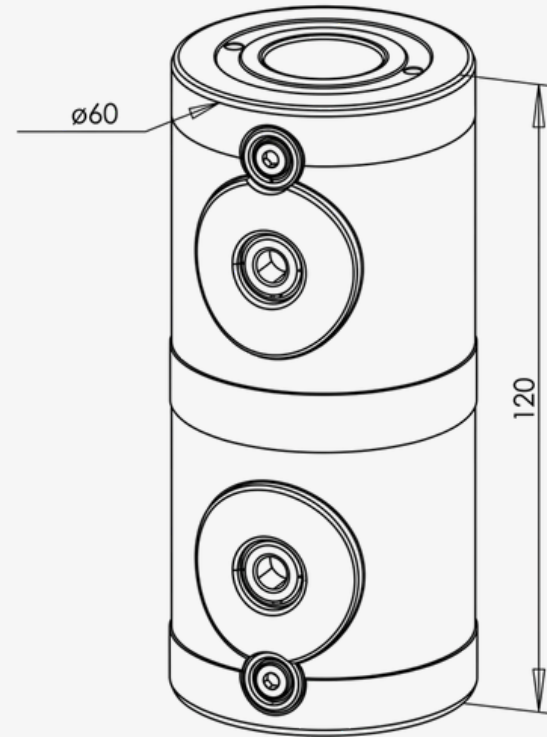
REPEATABILITY ±0.005 mm

WEIGHT 4.5 kg

STUDS  
**2**

FORMAT  
**DOUBLE**

PAIRS WITH  
**C4001**



**RHS-C6003**

# PULL-DOWN MODULE 60, DOUBLE

Mid-size stacked module for standard 5-axis clearance. Pairs with two RHS-C6001 M12 screws for 12 kN total pull-down force.

PART NUMBER **RHS-C6003**

SIZE 60 × 120 mm

MATERIAL Chrome steel

CLAMPING FORCE **12 000 N**

HARDNESS 46–60 HRC

MAX TORQUE 30 Nm

REPEATABILITY ±0.005 mm

WEIGHT 5 kg

STUDS  
**2**

FORMAT  
**DOUBLE**

PAIRS WITH  
**C6001**

SKU  
**C6003**

60 × 120 MM · STACKED



SKU  
**C8003**

**RHS-C8003**

# PULL-DOWN MODULE 80×160, DOUBLE

High-force stacked module for tall workpieces and heavy material. Delivers 18 kN pull-down with two M16 taper points on an 80×160 footprint.

PART NUMBER **RHS-C8003**

SIZE 80 × 160 mm

MATERIAL Chrome steel

CLAMPING FORCE **18 000 N**

HARDNESS 46–60 HRC

MAX TORQUE 40 Nm

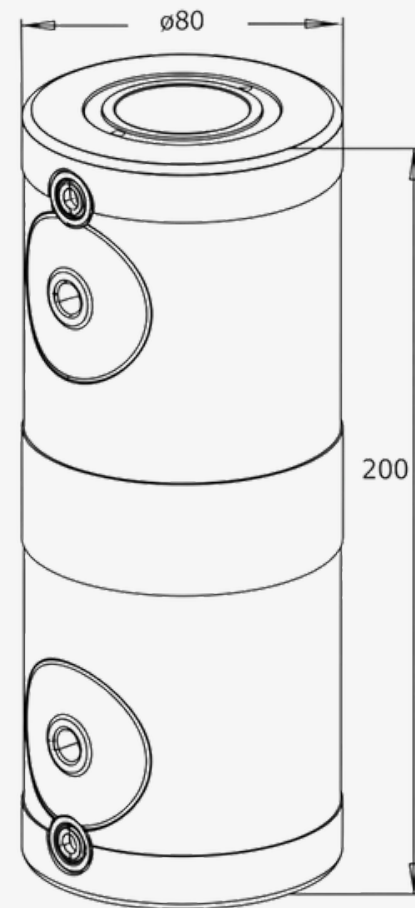
REPEATABILITY ±0.005 mm

WEIGHT 6 kg

STUDS  
**2**

FORMAT  
**DOUBLE**

PAIRS WITH  
**C8001**



SKU  
**C8004**

80 × 200 MM · EXTENDED

**RHS-C8004**

# PULL-DOWN MODULE 80×200, DOUBLE

Extended-length stacked module for long workpieces and extra reach — 80×200 footprint with the same 18 kN force and ±0.005 mm repeatability.

PART NUMBER **RHS-C8004**

SIZE 80 × 200 mm

MATERIAL Chrome steel

CLAMPING FORCE **18 000 N**

HARDNESS 46–60 HRC

MAX TORQUE 40 Nm

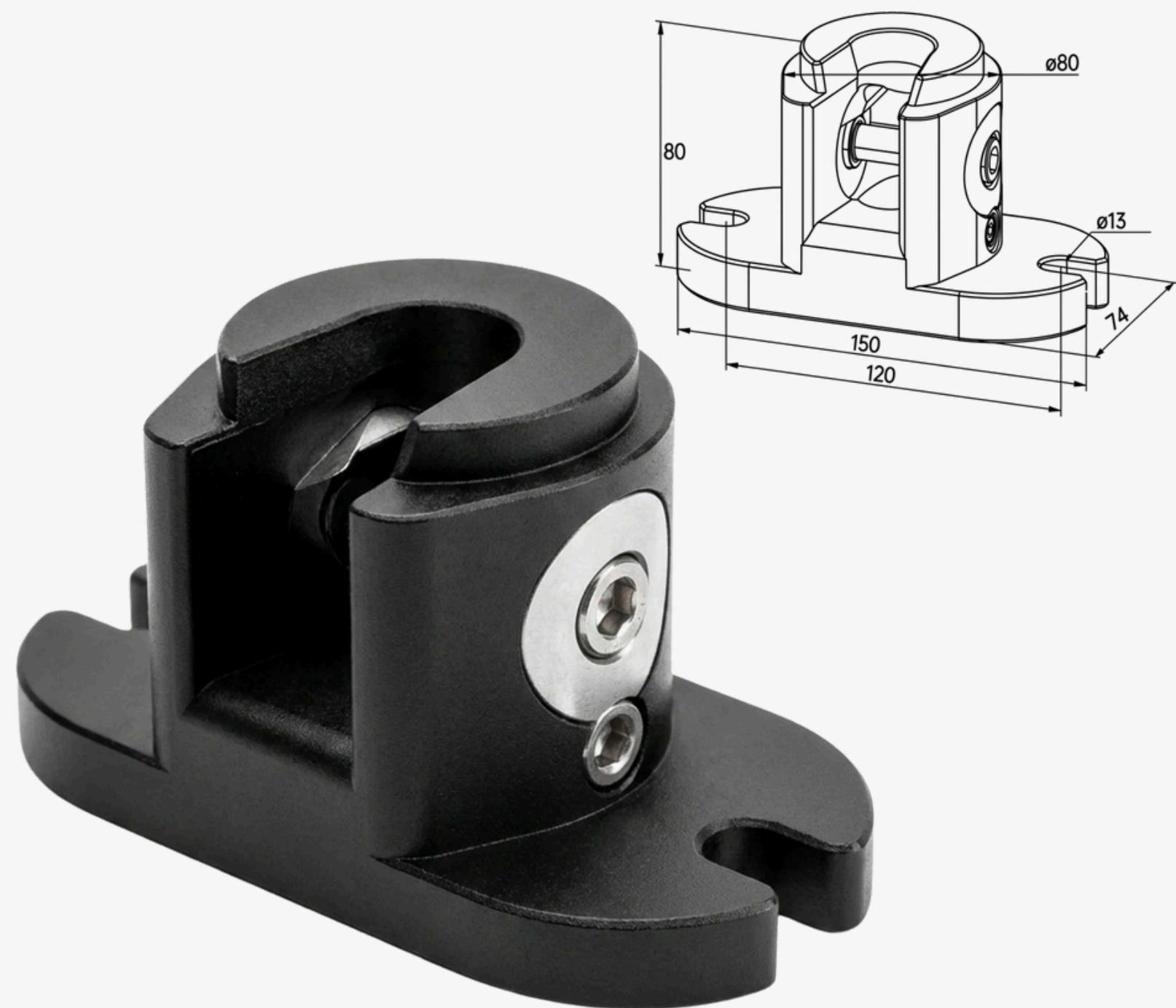
REPEATABILITY ±0.005 mm

WEIGHT 7 kg

STUDS  
**2**

FORMAT  
**EXTENDED**

PAIRS WITH  
**C8001**



SKU  
**C8007**

75 × 42 × 40 MM · FLANGED

**RHS-C8007**

# CLAMPING MODULE, FLANGED

Low-profile flanged base with side-mount release. Ideal for fixture plates and edge mounting where overhead clearance is limited.

PART NUMBER	<b>RHS-C8007</b>
SIZE	150 × 74 × 80 mm
MATERIAL	Chrome steel
CLAMPING FORCE	<b>18,000 N</b>
HARDNESS	46-60 HRC
MAX TORQUE	40 Nm
REPEATABILITY	±0.005 mm
MOUNTING	Side-mount release

FORMAT	PROFILE	RELEASE
<b>FLANGED</b>	<b>LOW</b>	<b>SIDE</b>



150 × 80 × 74 MM · FLANGED

SKU  
**C7002**

**RHS-C7002**

# HOOK CLAMPING MODULE D80, FLANGE

High-force hook module with side release — the heavy-duty complement to C7001. Used on edge-mount fixtures requiring 18 kN pull-down.

PART NUMBER	<b>RHS-C7002</b>
SIZE	150 × 80 × 74 mm
MATERIAL	Chrome steel
CLAMPING FORCE	<b>18 000 N</b>
MAX TORQUE	40 Nm
REPEATABILITY	±0.005 mm
MOUNTING	Side-mount hook release
APPLICATION	Edge fixtures · D80 modules

FORMAT  
**HOOK**

PROFILE  
**HEAVY**

RELEASE  
**SIDE**



100 × 80 × 73 mm

SKU  
**C8006**

**RHS-C8006**

**HOOK CLAMPING MODULE  
DIA. 80 MM SINGLE**

Designed for strong clamping force and precision repeatability.

PART NUMBER	<b>RHS-C8006</b>
SIZE	100 × 80 × 73 mm
MATERIAL	Chrome steel
CLAMPING FORCE	<b>18 000 N</b>
MAX TORQUE	40 Nm
REPEATABILITY	±0.005 mm
MOUNTING	Side-mount hook release
APPLICATION	CNC machining / EDM / robotic automation / modular fixturing

FORMAT  
**HOOK**

PROFILE  
**HEAVY**

RELEASE  
**SIDE**



150 x 80 x 74 MM · FLANGED

SKU  
**C7001**

**RHS-C7001**

# FCS COMPATIBLE CNC PULL DOWN CLAMPING MODULE 80 FLANGED

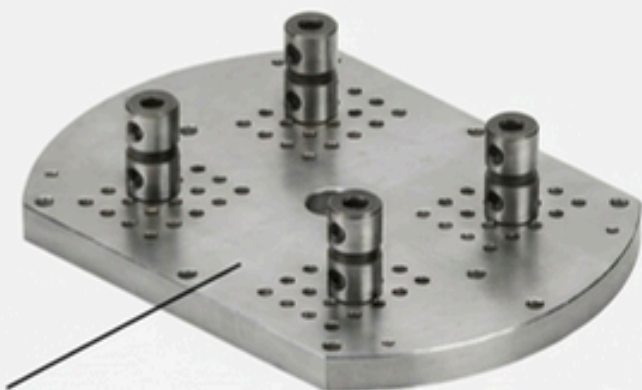
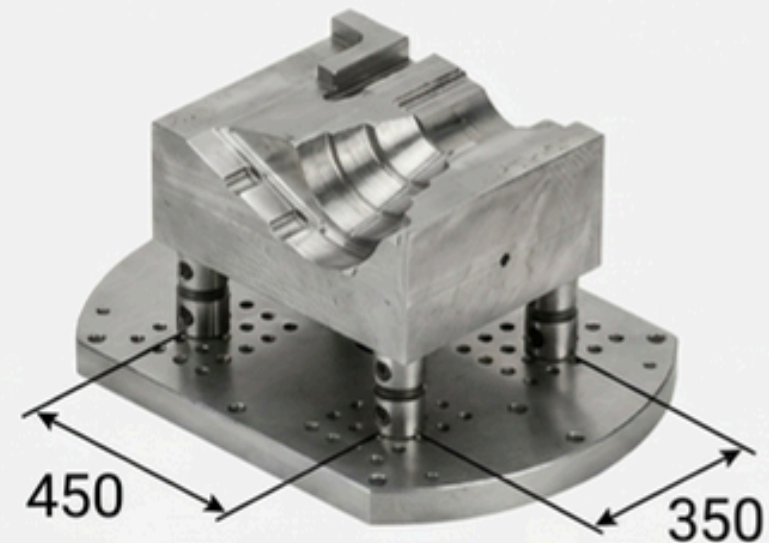
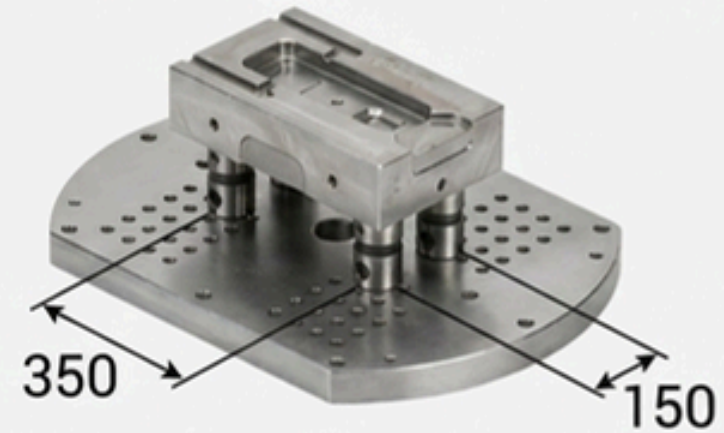
Engineered for secure and repeatable clamping of fixtures and palletized workpieces.

PART NUMBER	<b>RHS-C7001</b>
SIZE	145 x 80 x 80 mm
MATERIAL	Chrome steel
CLAMPING FORCE	<b>18 000 N</b>
MAX TORQUE	30 Nm
REPEATABILITY	±0.005 mm
MOUNTING	Side-mount hook release
APPLICATION	Clamping Module Ø80 mm, Flanged

FORMAT  
**HOOK**

PROFILE  
**HEAVY**

RELEASE  
**SIDE**



Custom fixture plate with 50mm pitch holes

**RHS-C1001**

# Universal fixture plate.

Modular 50 mm pitch pattern — mount any combination of pull-down modules on a single platform. Compatible with FCS, WOW and RHS fixtures.

**50mm**  
HOLE PITCH

**FCS/ WOW**  
COMPATIBILITY

**∞**  
MODULE COMBOS

TYPE	Universal fixture plate
MATERIAL	Precision ground steel / hardened tool steel
MOUNTING	Modular positioning with locating pillars & clamping
CUSTOM	<b>Custom hole patterns on request</b>
APPLICATIONS	EDM · Milling · CNC workholding

# GET IN TOUCH.

Request a quote, confirm compatibility with your current fixtures, or order direct. Local inventory in Tecumseh, Ontario — shipping across North America.

PHONE

**+1 (519) 999-9723**

EMAIL

**sales@rapidholdingsystems.com**

WEB

**www.rapidholdingsystems.com**

SHOP & INVENTORY

11555 County Rd 42 Tecumseh, ON N8N 0H1 Canada